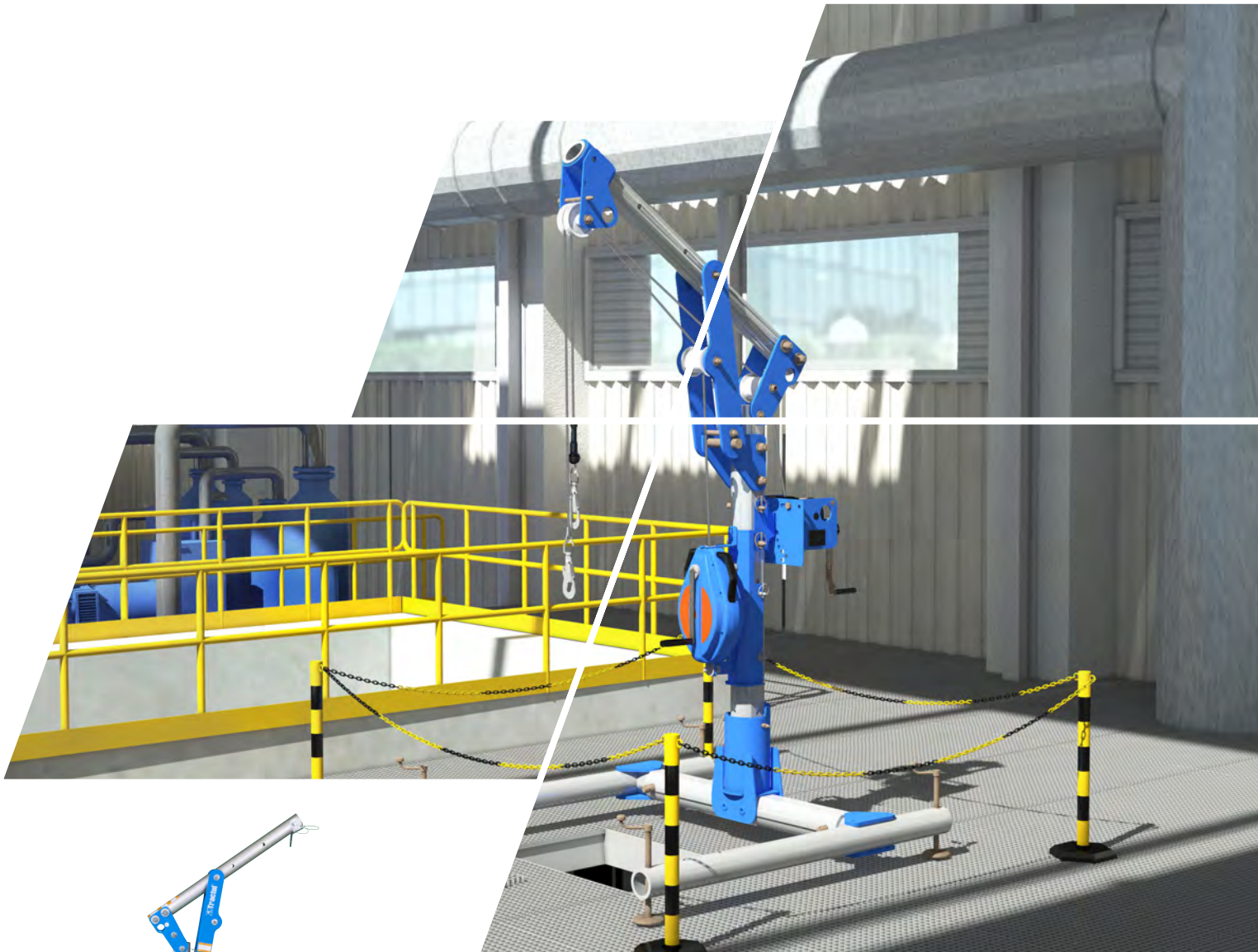




PART OF ALIMAK GROUP



## Davitrac

Complete solution for access and work in confined spaces



[www.tractel.com](http://www.tractel.com)

# Davitrac

Temporary anchor point for confined space entry, retrieval and fall protection

The Davitrac is a complete solution for safe vertical rope access or material lifting in a confined space situation.

## Mobile and efficient solution for rescue situations.

It offers protection and total mobility for up to two users simultaneously, during work involving a risk of falling. Its compatibility with the Tractel product range allows a large number of possible configurations.

### QUALITY

- Compact
- Easy to use
- Compatible for suspended work
- Rope access: manual or motorized
- Lifting material: manual or motorized

### ERGONOMICS

- Easy handling / Very lightweight
- Easy to transport: integrated carrying handle
- Easy to install: installation by one person in less than two minutes without tools

### SPECIFICATIONS

- Weight: 65.5 lb. (29,7 kg) without accessories and adapters.
- Each PPE anchor point rated up to 330 lb. (150 kg).
- Can be used by:
  - Up to two users up to 330 lb. (150 kg) each—one worker in the confined space and one worker operating the Davitrac—depending on the fall arrest system used. Each user must be secured on separated PPE anchor points.
  - A single user up to 330 lb. (150 kg) and a maximum material lifting capacity of 1,100 lb. (500 kg), depending on the systems used.
  - Material lifting maximum capacity 1,100 lb. (500 kg), depending on the lifting tools used.

### APPLICATIONS

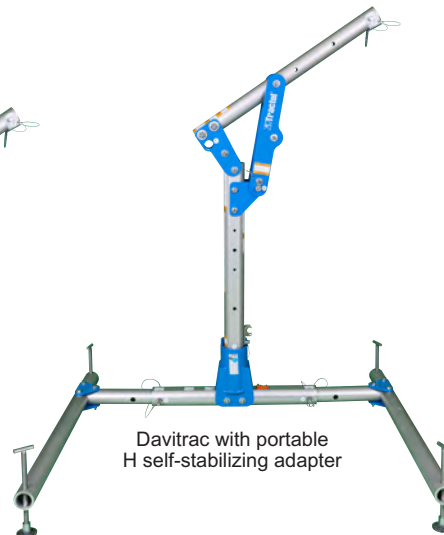
- Rescue
- Confined spaces
- Rope works
- Manholes
- Pits
- Sewerod access
- Pipes
- Oil and gas
- Civil engineering
- Industry
- Wind and solar installation

### APPLICABLE STANDARDS

- CSA Z259.15-17
- ANSI Z359.18-17
- Meets OSHA requirements

### FLEXIBILITY

- Can be semi-permanent or permanent.
- Well suited for use as a transportable anchor point for working in confined spaces.
- Anchorage for up to two users
- Can be used for lifting materials.
- Different type of adapters.
- Modular: different combinations possible with lifting and fall arrest device Tractel products.



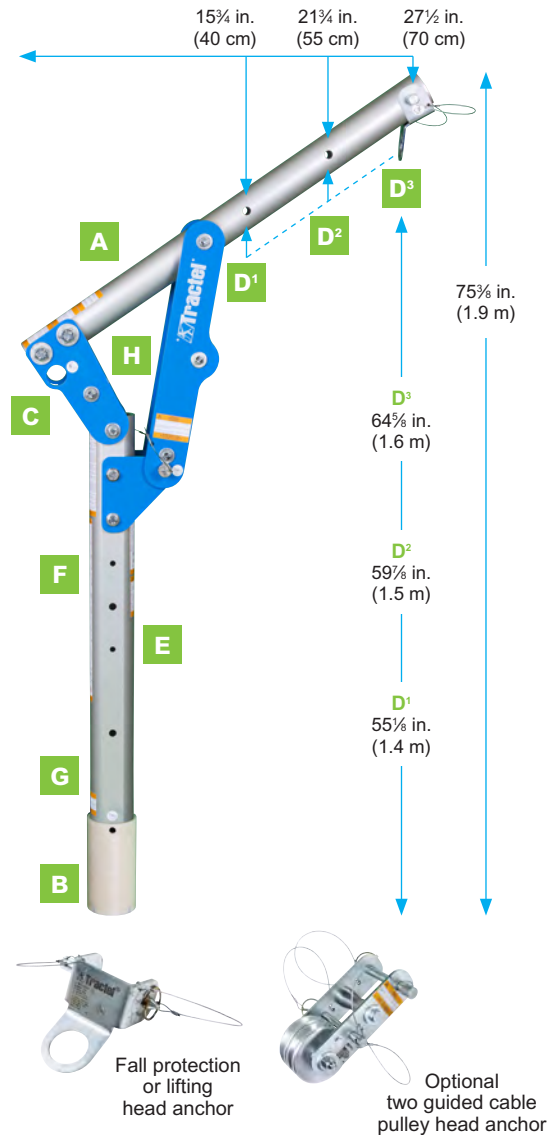
Tractel supports you in your project and offers you a wide range of individual and collective protection solution that secures the operations.  
Contact us for more information!

# Davitrac

Temporary anchor point for confined space entry, retrieval and fall protection

- A. ARM**
  - Rod made of aluminium
  - Lightweight materials
- B. ADAPTER**
  - Different types of adapters: fixed and mobile adapters
- C. ANCHORAGES**
  - Anchor points for fall arresters
  - Certified for fall arrest for up to two users at the same time (330 lb. [150 kg] each)
  - One worker in the confined space and one worker operating the Davitrac
- D. HEAD ANCHORS**
  - **Fall protection head anchor** to connect fall protection equipment
  - **Lifting head anchor** to connect lifting equipment
  - **Two guided cable pulley head anchor** (sold separately) for the cable of retrieval lifeline and/or the cable of a manual or motorized winch
- E./F. OPTION: BRACKET FOR BLOCFOR BI-DIRECTIONAL RETRIEVAL LIFELINES**
  - Blocfor T1T50G for a 50 ft. (15 m) reach or Blocfor T1T100G for a 100 ft. (30 m) reach
  - Plate for integration of an automatic fall protection device with integrated winch for ascending or descending during a possible rescue operation
- E./F. OPTION: BRACKET FOR WINCH OR SCAFOR\***
  - Plate for integration of a rescue winch.
- G. 360° ROTATING MAST (WITH LOCKING EVERY 90°)**
  - Facilitates handling for material lifting and the recovery of persons.
- H. QUICK RELEASE**
  - To fold the Davitrac (facilitates transport).

\*Both brackets can be integrated at the front or rear of the mast.

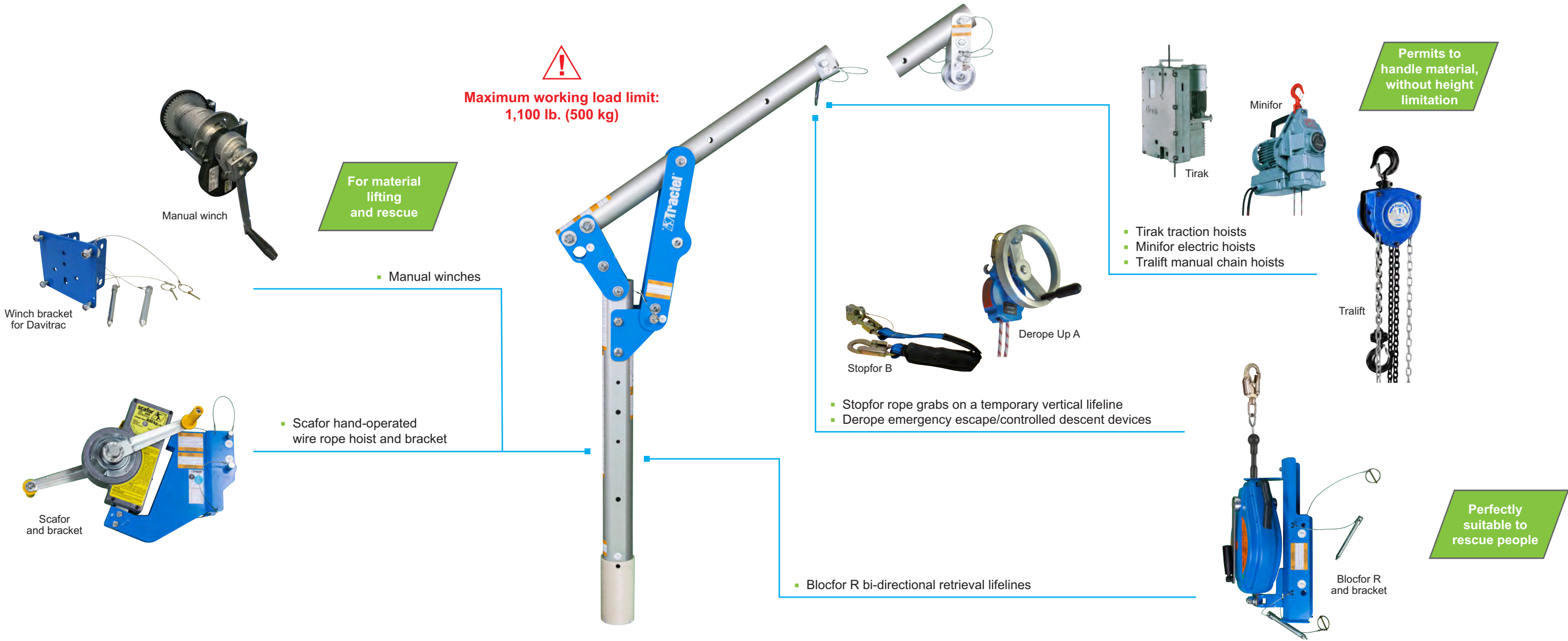


## Accessories

CODE	MODEL NAME
DT1000	Davitrac davit arm
<b>Adapters</b>	
T90DAVI-WMA	Wall mounted adapter
T90DAVI-CMA	Clearance mural adapter
T90DAVI-MFA	Mounted floor adapter
T90DAVI-FFA	Flush floor adapter
T90DAVI-CAP	Protective cap for flush floor adapter
T90DAVI-PHB	Portable H self-stabilizing adapter
<b>Accessories</b>	
DTR1000	Davitrac transport trolley
DTB1000	Davitrac transport bag



# Solutions with Tractel products



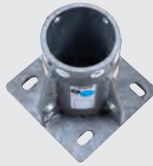
## Range of adapter options offers complete versatility



**Wall mounted adapter\***  
Wall mounted adapter fixed to concrete or steel vertical structures.



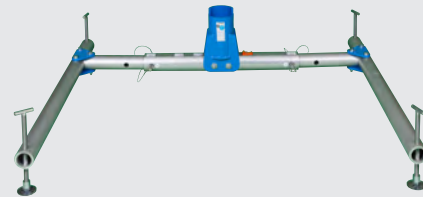
**Clearance mural adapter\***  
Clearance mural adapter (with 11 3/8 in. [291 mm] offset) fixed to concrete or steel vertical structures.



**Mounted floor adapter\***  
Mounted floor adapter fixed to concrete or steel horizontal structure.



**Flush floor adapter**  
Flush adapter moulded into the concrete. Ideal to have no obstacles on the ground surface to prevent falls. Delivered with a special protection stopper, to use when Davitrac is not used/integrated on the adapter.



**Portable H self-stabilizing adapter**  
Portable H self-stabilizing adapter to be used when a fixed adapter can't be installed definitely. Perfect transportable solution for fall protection as well as material lifting. Its adjustable adapter allows it to be used for any type of standard confined access.

\*Adapter with anchoring points to secure up to two persons of 330 lb. (150 kg) each at the same time.

# TRACTEL WORLDWIDE

## NORTH AMERICA

### CANADA

#### Tractel Ltd.

1615 Warden Avenue  
Toronto, ON M1R 2T3, Canada  
Phone: +1-800-561-3229  
Fax: +1-416-298-0168  
tractel.canada@alimakgroup.com

#### Tractel Ltd.

11020 Mirabeau Street  
Montreal, QC H1J 2S3, Canada  
Phone: +1-800-561-3229  
Fax: +1-514-493-3342  
tractel.canada@alimakgroup.com

### MEXICO

#### Tractel México S.A. de C.V.

Poniente 146 No. 700 Bodega 2A  
Industrial Vallejo  
Ciudad de México, CP. 02300  
Phone: +52 55 67218718  
Fax: +52 55 67218719  
tractel.mexico@alimakgroup.com

### USA

#### Tractel Inc.

#### BlueWater L.L.C.

#### Fabenco, Inc.

6300 West by Northwest Blvd,  
Suite 100  
Houston, TX 77040, USA  
Phone: +1-800-421-0246  
tractel.usa@alimakgroup.com

#### Tractel Inc.

168 Mason Way, Unit B2  
City of Industry, CA 91746, USA  
Phone: +1-800-675-6727  
Fax: +1-626-937-6730  
tractel.usa@alimakgroup.com

## EUROPE

### GERMANY

#### Tractel Greifzug GmbH

Scheidtbackstrasse 19-21  
51469 Bergisch Gladbach, Germany  
Phone: +49 22 02 10 04-0  
Fax: +49 22 02 10 04 70  
info.greifzug@tractel.com

### LUXEMBOURG

#### Tractel Secalt S.A.

Rue de l'Industrie  
B.P 1113 - 3895 Foetz, Luxembourg  
Phone: +352 43 42 42-1  
Fax: +352 43 42 42-200  
secalt@tractel.com

### SPAIN

#### Tractel Ibérica S.A.

Carretera del Medio, 265  
08907 L'Hospitalet del Llobregat  
Barcelona, Spain  
Phone: +34 93 335 11 00  
Fax: +34 93 336 39 16  
infotib@tractel.com

### FRANCE

#### Tractel S.A.S.

RD 619 Saint-Hilaire-sous-Romilly  
BP 38 Romilly-sur-Seine  
10102, France  
Phone: +33 3 25 21 07 00  
info.tsas@tractel.com

#### Île de France Maintenance Service S.A.S.

3 rue de champfleuri  
Zac du Gué de Launay  
77360 Vaires sur Marne, France  
Phone: +33 1 56 29 22 22  
ifms.tractel@tractel.com

#### Tractel Location Service

3 rue de champfleuri  
Zac du Gué de Launay  
77360 Vaires sur Marne, France  
Phone: +33 1 60 36 30 00  
info.tls@tractel.com

#### Tractel Solutions S.A.S.

77-79, rue Jules Guesde  
69230 Saint-Genis-Laval, France  
Phone: +33 4 78 50 18 18  
Fax: +33 4 72 66 25 41  
info.tractelsolutions@tractel.com

### GREAT BRITAIN

#### Tractel UK Limited

Old Lane Halfway  
Sheffield S20 3GA, United Kingdom  
Phone: +44 114 248 22 66  
sales.uk@tractel.com

### ITALY

#### Tractel Italiana SpA

Viale Europa 50  
Cologno Monzese (Milano) 20093,  
Italy  
Phone: +39 02 254 47 86  
Fax: +39 02 254 71 39  
infoit@tractel.com

### NETHERLANDS

#### Tractel Benelux BV

Paardeweide 38  
Breda 4824 EH, Netherlands  
Phone: +31 76 54 35 135  
Fax: +31 76 54 35 136  
sales.benelux@tractel.com

### PORTUGAL

#### Lusotractel Lda

Bairro Alto Do Outeiro Armazém,  
Trajouce, 2785-653 S. Domingos  
de Rana, Portugal  
Phone: +351 214 459 800  
Fax: +351 214 459 809  
comercial.lusotractel@tractel.com

### POLAND

#### Tractel Polska Sp. Zo.o.

ul. Byslawska 82  
Warszawa 04-993, Poland  
Phone: +48 22 616 42 44  
Fax: +48 22 616 42 47  
tractel.polska@tractel.com

### NORDICS

#### Tractel Nordics

#### (Scanclimber Oy)

Turkkirata 26, FI - 33960  
Pirkkala, Finland  
Phone: +358 10 680 7000  
Fax: +358 10 680 7033  
tractel@scanclimber.com

### RUSSIA

#### Tractel Russia O.O.O.

Olympiysky Prospect 38, Office 411  
Mytishchi, Moscow Region  
141006, Russia  
Phone: +7 495 989 5135  
info.russia@tractel.com

## ASIA

### CHINA

#### Shanghai Tractel Mechanical Equip. Tech. Co. Ltd.

2<sup>nd</sup> floor, Block 1, 3500 Xiupu road,  
Kangqiao, Pudong,  
Shanghai, People's Republic of China  
Phone: +86 21 6322 5570  
Fax: +86 21 5353 0982

### SINGAPORE

#### Tractel Singapore Pte Ltd.

50 Woodlands Industrial Park E7  
Singapore 757824  
Phone: +65 6757 3113  
Fax: +65 6757 3003  
enquiry@tractelsingapore.com

### UNITED ARAB EMIRATES

#### Tractel Secalt SA Dubai Branch

Office 1404, Prime Tower Business Bay  
PB 25768 Dubai, United Arab  
Emirates  
Phone: +971 4 343 0703  
tractel.me@tractel.com

### INDIA

#### Secalt India Pvt Ltd.

412/A, 4th Floor, C-Wing,  
Kailash Business Park,  
Veer Savarkar Road,  
Parksite, Vikhroli West,  
Mumbai 400079, India  
Phone: +91 22 25175470/71/72  
info@secalt-india.com

### TURKEY

#### Knot Yapı ve İş Güvenliği San. Tic. A.Ş.

Cevizli Mh. Tugay Yolu CD.  
Nuvo Dragos Sitesi  
A/120 Kat.11 Maltepe  
34846 Istanbul, Turkey  
Phone: +90 216 377 13 13  
Fax: +90 216 377 54 44  
info@knot.com.tr

## ANY OTHER

#### Tractel S.A.S.

RD 619 Saint-Hilaire-sous-Romilly  
BP 38 Romilly-sur-Seine  
10102 France  
Phone: +33 3 25 21 07 00  
info.tsas@tractel.com